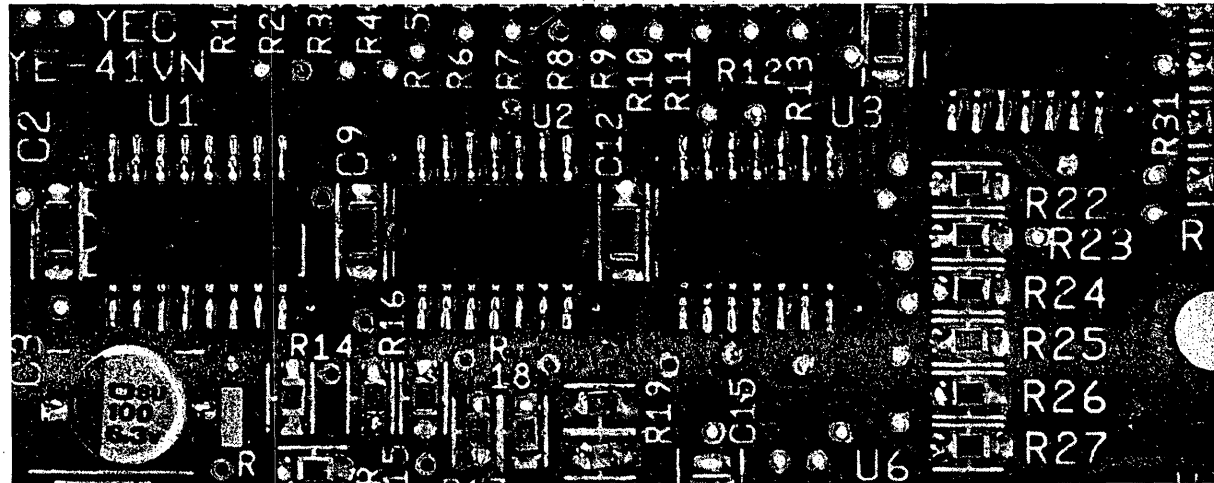


ANALOG MONITOR CARD

Varispeed SERIES OPTION CARD

MODEL AO-08



Before initial operation, read these instructions thoroughly, and retain for future reference.



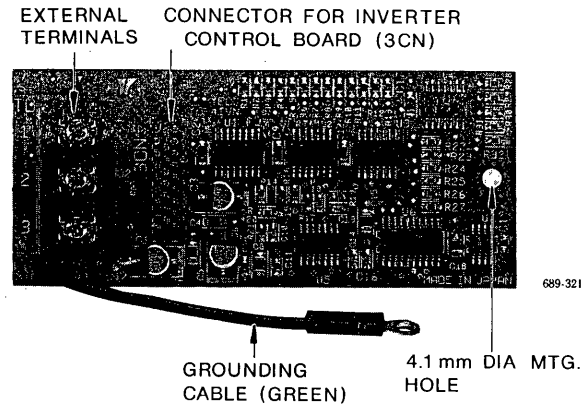
YASKAWA

The analog monitor card (hereinafter called AO-08), an on-board type option card, is mounted on the inverter control board to output analog signals for monitoring the inverter outputs (output frequency, output current, etc.)

This AO-08 is applicable to the following four inverter series :

- VS-616G3
- VS-616H3
- VS-676VG3
- VS-676VH3

| Name | Code No. | Output Method |
|----------------------------------|-------------|---|
| Analog Output Monitor Card AO-08 | 73600-D001X | Output resolution : 8 bits (1/256) Output voltage : 0 to + 10 V (non-insulated) Output channel : 2 channels |



ANALOG MONITOR CARD AO-08

PRECAUTIONS

- (1) Before using AO-08, read the instruction manual of the applicable inverters (VS-616G3, VS-616H3, VS-676VG3 or VS-676VH3).
- (2) Before connection of AO-08 connector or external terminals, turn off the inverter AC main circuit power supply and check that the inverter CHARGE indicator lamp is out.

INSTALLATION TO INVERTER (Fig. 1)

- (1) Turn off AC main circuit power supply and remove the inverter face plate. Check that the inverter CHARGE indicator lamp is out.
- (2) Mount AO-08 connector 3CN on connector 3CN (number of pins : 34 poles) on the inverter control board. Insert the optional card support on the control board to AO-08 support hole (1 point) to support the AO-08.

NOTE

AO-08 cannot be mounted on any connectors other than 3CN.

- (3) Connect AO-08 grounding cable (green) to control terminal No. 12 on the inverter control board.
- (4) After installing of AO-08, connect to peripheral equipment. When connection is completed, replace the inverter face plate.

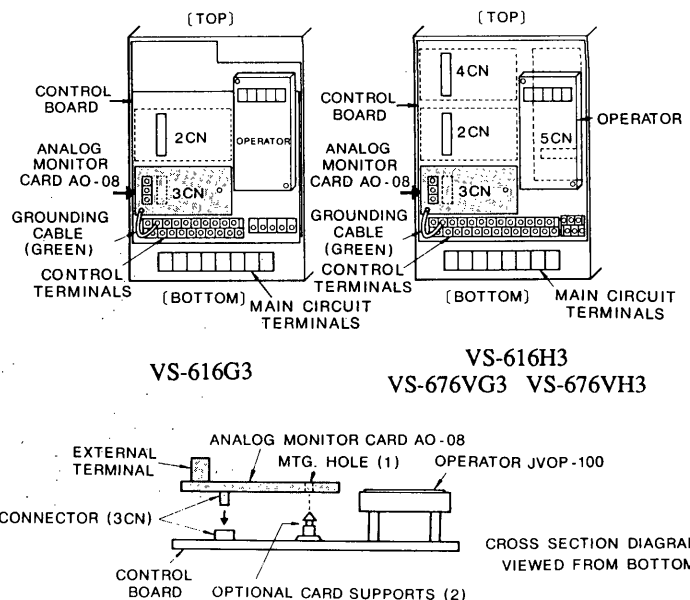
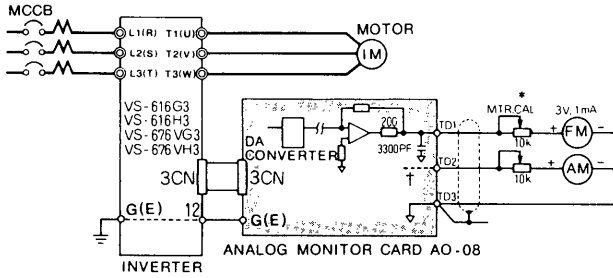


Fig. 1 Installation of Analog Monitor Card AO-08

INTERCONNECTION BETWEEN EQUIPMENT

Fig. 2 shows interconnection of inverter with AO-08 and peripheral equipment where AO-08 output is connected to a pulse counter.



* In some applications, MTR.CAL can be omitted by setting or adjusting program constants (bn-□□□).

† TD2 output circuit is the same as that of TD1.

Fig. 2 Interconnection Diagram

PRECAUTIONS FOR WIRING

- (1) Separate AO-08 control signal wiring (terminals TD1 to TD3) from main circuit wiring or other power lines.
- (2) Use shielded cable for control signal wiring and prepare the ends as shown in Fig. 3 to prevent malfunctions caused by noise. Wiring length must be 50 m or less.

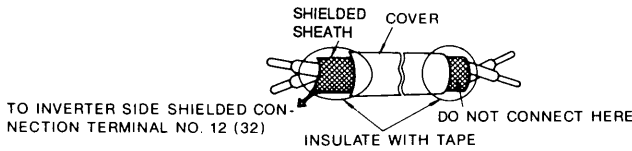


Fig. 3 Preparation of Shielded Cable Ends

EXTERNAL TERMINAL FUNCTIONS

AO-08 has 3 external terminals for connection with peripheral equipment. Table 1 shows the terminal functions.

Table 1 Terminal Functions

| Terminal Symbol | Screw Size | Function | Signal Level | Output Accuracy | Remarks |
|-----------------|------------|-----------------------------------|--|-------------------------|------------------------------------|
| TD1 | M3 | Analog signal output : channel 1* | 0 to + 10 V (max. load current : 3 mA) † | Refer to Tables 2 to 4. | Output resolution : 8 bits (1/256) |
| TD2 | | Analog signal output : channel 2* | | | |
| TD3 | | Common terminal | 0V | | |

* Output contents of TD1 or TD2 analog signal can be selected by setting the inverter program constants. For details, refer to "EXTERNAL TERMINAL OUTPUT CONTENTS AND ACCURACY".

† Output signal level of TD1 or TD2 analog signal can be adjusted by setting the inverter program constants. For details, refer to "OUTPUT SIGNAL LEVEL SETTING". Output signal level can be output up to 11 V by setting program constants.

EXTERNAL TERMINAL OUTPUT CONTENTS AND ACCURACY

Table 2 Connection with VS-616G3

| External Terminal | Program Constant No. | Set Value | Output Contents | Output Accuracy |
|-------------------|----------------------|-----------|--|-----------------|
| TD1 Channel 1 | Sn-28 1st/2nd digit | 00 | Output frequency : Max. frequency/100% | 2.0% |
| | | 01 | Output current : Inverter rated current/100% | 3.0% |
| TD2 Channel 2 | Sn-28 3rd/4th digit | 10 | Output voltage ref. : Input voltage/100% | 2.0% |
| | | 11 | DC voltage (VPN) : 400 V/100% (200 V class) 800 V/100% (400 V class) | 2.0% |

Table 3 Connection with VS-616H3

| External Terminal | Program Constant No. | Set Value | Output Contents | Output Accuracy |
|-------------------|----------------------|-----------|--|-----------------|
| TD1 Channel 1 | bn-15 | 1 | Frequency ref. : Max. frequency/100% | 2.0% |
| | | 2 | Output frequency : Max. frequency/100% | |
| | | 3 | Output current : Rated current/100% | 3.0% |
| | | 4 | Output voltage ref. : Input voltage/100% | 2.0% |
| | | 5 | DC voltage (VPN) : 400 V/100% (200 V class) 800 V/100% (400 V class) | |
| TD2 Channel 2 | bn-17 | 6 | Output power (± indication) : Rated power (kW)/100% | 10.0% |
| | | 17 | Speed feedback (PG, TG) : Max. frequency/100% | 2.0% |
| | | 18 | Compensated frequency (PG, TG) : Max. frequency/100% | |
| | | 19 | Voltage feedback (AVR) : Input voltage/100% | |
| | | 20 | Compensated voltage (AVR) : Input voltage/100% | |
| | | 21 | Momentary reduced value : Max. frequency/100% | |

Note : Refer to "OUTPUT SIGNAL LEVEL SETTING" for 100% output signal level in output contents.

Table 4 Connection with VS-676VG3 or VS-676VH3

| External Terminal | Program Constant No. | Set Value | Output Contents | Output Accuracy |
|-------------------|--|-----------|---|-----------------|
| TD1 Channel 1 | bn-22 | 3 | Output current : Motor rated current/100% | 3.0% |
| | | 4 | Output voltage ref. : No-load voltage/100% | 2.0% |
| | | 5 | DC voltage (VPN) : 400 V/100% (200 V class), 800 V/100% (400 V class) | |
| | | 21 | Speed ref. (SFS input) : Max. rotation speed/100% | 2.0% |
| | | 22 | Speed ref. (SFS output) : Max. rotation speed/100% | |
| | | 23 | Speed feedback : Max. rotation speed/100% | |
| | | 24 | Ext. torque ref. : Motor rated torque/100% | |
| | | 25 | Torque compensation : Motor rated torque/100% | |
| | | 26 | Torque ref. (inner) : Motor rated torque/100% | |
| | | 27 | Torque feedback : Motor rated torque/100% | |
| 28 | ASR input (speed deviation) : Max. rotation speed/100% | | | |
| 29 | ASR output (after filter) : Motor rated secondary current/100% | | | |
| 30 | Slip frequency : Rated slip frequency/100% | | | |
| TD2 Channel 2 | bn-24 | 31 | Primary frequency ref. : Max. synchronous frequency/100% | 2.0% |
| | | 32 | Motor temp : 200°C/100% | |

Note : Refer to "OUTPUT SIGNAL LEVEL SETTING" for 100% output signal level in output contents.

OUTPUT SIGNAL LEVEL SETTING

Output signal level of external terminal TD1 or TD2 can be set by $10 \text{ V} \times \square\square\square\square (\text{setting data})/100\%$.

| Applicable Inverter | External Terminal | Program Constant No. | Setting Range | Setting Unit | Initial Value |
|------------------------|-------------------|----------------------|-----------------|--------------|---------------|
| VS-616G3 | TD1 | bn-11 | 0.00 to 2.55 | 0.01 | 1.00 |
| | TD2 | bn-12 | | | 0.50 |
| VS-616H3 | TD1 | bn-16 | 0.000 to 10.000 | 0.001 | 1.000 |
| | TD2 | bn-18 | | | 0.500 |
| VS-676VG3 VS-676VH3 | TD1 | bn-23 | 0.000 to 10.000 | 0.001 | 1.000 |
| | TD2 | bn-25 | | | |

ANALOG MONITOR CARD

Varispeed SERIES OPTION CARD

MODEL AO-08

TOKYO OFFICE Ohtemachi Bldg, 1-6-1 Ohtemachi, Chiyoda-ku, Tokyo, 100 Japan
Phone (03) 3284-9111, -9145 Telex YASKAWA J33530 Fax (03) 3284-9034

SEOUL OFFICE Seoul Center Bldg, 91-1, So Kong-Dong, Chung-ku, Seoul, Korea
Phone (02) 776-7844 Fax (02) 753-2639

TAIPEI OFFICE Union Commercial Bldg, 14F, 137, Nanking East Road, Sec 2, Taipei, Taiwan
Phone (02) 507-7065, -7732 Fax (02) 506-3837

YASKAWA ELECTRIC AMERICA, INC. : SUBSIDIARY
Chicago-Corporate Headquarters 2942 MacArthur Blvd. Northbrook, Illinois 60062-2028, U.S.A.
Phone (708) 291-2340 Fax (708) 498-2430
Chicago-Technical Center 3160 MacArthur Blvd. Northbrook, Illinois 60062-1917, U.S.A.
Phone (708) 291-0411 Fax (708) 291-1028

Los Angeles Office 7341 Lincoln Way, Garden Grove, California 92641, U.S.A.
Phone (714) 894-5911 Telex (230) 678396 YASKAWAUS TSTN Fax (714) 894-3258

New Jersey Office 30 Two Bridges Road, Fairfield, New Jersey 07006, U.S.A.
Phone (201) 575-5940 Fax (201) 575-5947

YASKAWA ELECTRIC EUROPE GmbH : SUBSIDIARY
Niederhochstadter Straße 71-73, W 6242 Kronberg-Oberhöchstadt, Germany
Phone (06173) 938-0 Telex 415660 YASE D Fax (06173) 68421

YASKAWA ELÉTRICO DO BRASIL COMÉRCIO LTDA. : SUBSIDIARY
Av. Brig. Faria Lima, 1664-cj, 721/724, Pinheiros, São Paulo-SP, Brasil CEP-01452
Phone (011) 813-3933, 813-3694 Telex (011) 82869 YSKW BR Fax (011) 815-8795

YASKAWA ELECTRIC (SINGAPORE) PTE. LTD.
CPF Bldg, 79 Robinson Road No. 13-05, Singapore 0106
Phone 2217530 Telex (87) 24890 YASKAWA RS Fax (65) 224-5854



YASKAWA ELECTRIC CORPORATION

YASKAWA

TOE-C736-30.21C

© Printed in Japan November 1992 90-7 1TA ◇
689-321